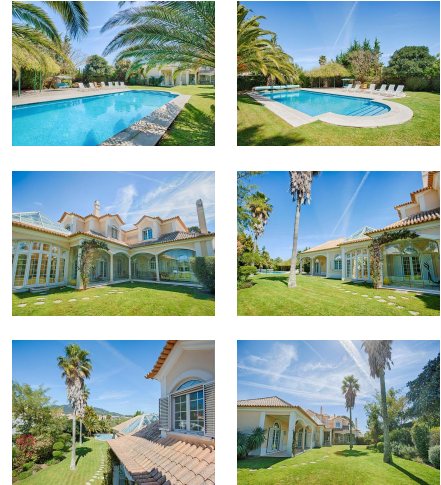


CASCAIS Avenida Marginal, 8648 B,
Phone: (+351) 214826830 - (+351)214866560 | Fax: (+351)
214861268
E-mail: info@portadafrente.pt

LISBOA Avenida da Liberdade, nº204, 2º Esq, 1250-147 Lisboa
Phone: (+351) 213 806 110 | Mobile: (+351) 93 728 76 33
E-mail: info@portadafrente.pt

OEIRAS Rua Doutor José da Cunha, nº20 A, 2780-187 Oeiras
Phone: (+351) 214 688 891
E-mail: info@portadafrente.pt

PF13602, Moradia T5+4, SINTRA Venda por 1.650.000€



Property Description

Reference PF13602

County: SINTRA

Parish: S.MARIA E S.MIGUEL,
S.MARTINHO, S.PEDRO PENAFERRIM

Zone: Quinta da Beloura

Status: Used

Construct Year: 2002

Net Area: 475.0 m²

Private Gross Area: 665.0 m²

Land Area: 1849.0 m²

Fabulous 5 + 4 bedroom villa, with a lovely garden and swimming pool, with a lot of privacy and excellent solar orientation located in the best part of Quinta da Beloura close to the golf course. It stands in a plot of 1,849 sqm and has around 665 sqm of gross constructed area. The villa has excellent sized spaces and comprises, on the ground floor: a living area of almost 50 sqm with a fireplace and with access to a welcoming closed in terrace with a barbecue, a dining room, a small television room or office, a guest bathroom, a kitchen of 32 sqm with a pantry, a breakfast area and access off the property, a laundry room, a winter garden, and 2 spacious bedrooms each of 21 sqm and a shared bathroom. First floor: a suite with a terrace and a closet and 2 bedrooms with a shared bathroom. Lower ground floor: a games room, a Turkish bath, a bathroom, a suite with natural light and 2 storage areas. There is a garage for 2 cars. The villa has central heating, double glazing and central vacuuming.

Features

Divisions

WC 7	Kitchen 1	Office 1
Garage 2	Lavatory 1	Laundry 1
Room 4	Playroom 1	Suite 2

Equipment

Outdoor Swimming Pool	Video Doorman	Terrace
Fireplace	Garden	Barbecue
Turkish Bath	Central Vacuum Cleaning System	Central Heating

Equipment

Pool

Garage

Areas

Gross Area 665.0 m²

Land Area 1849.0 m²